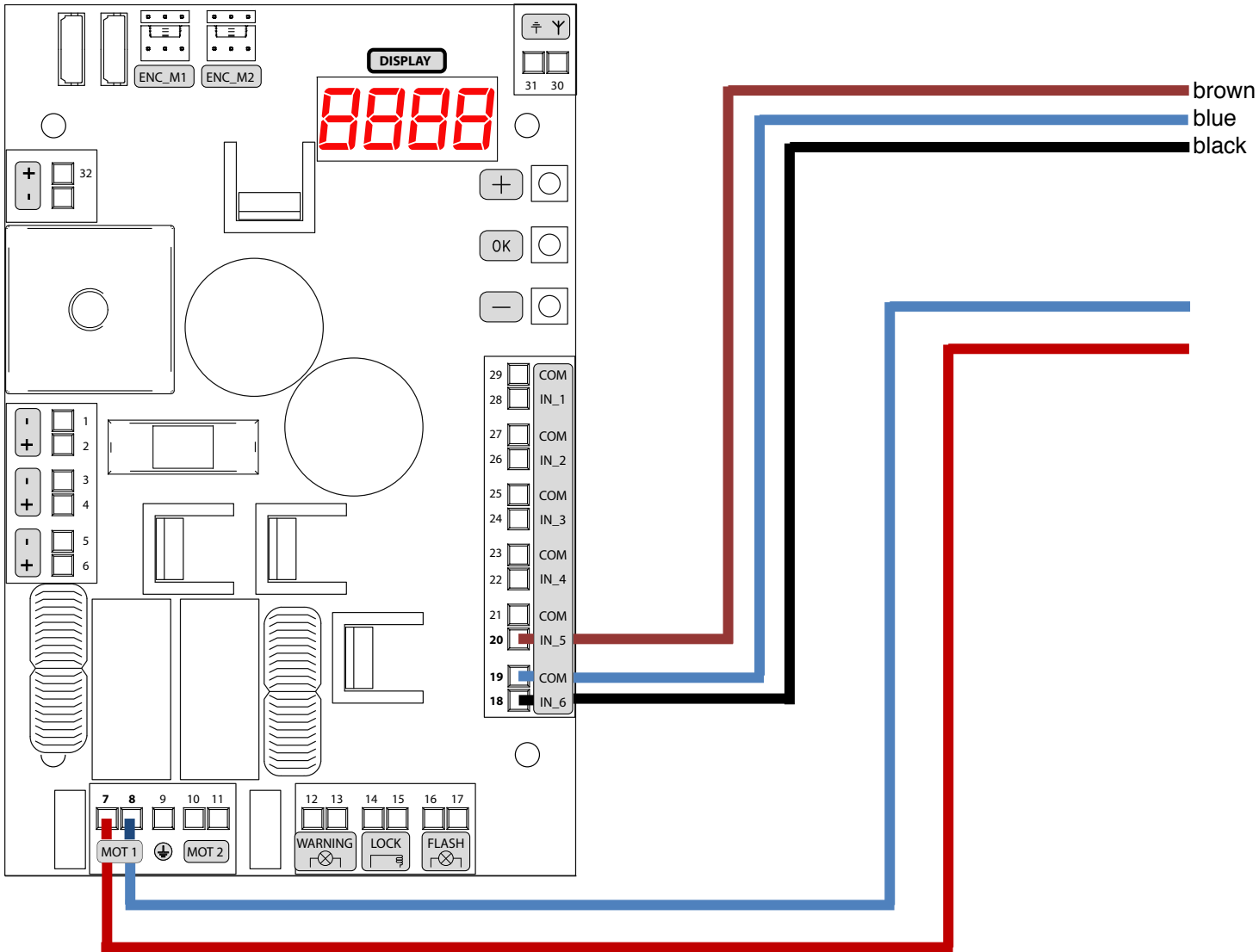
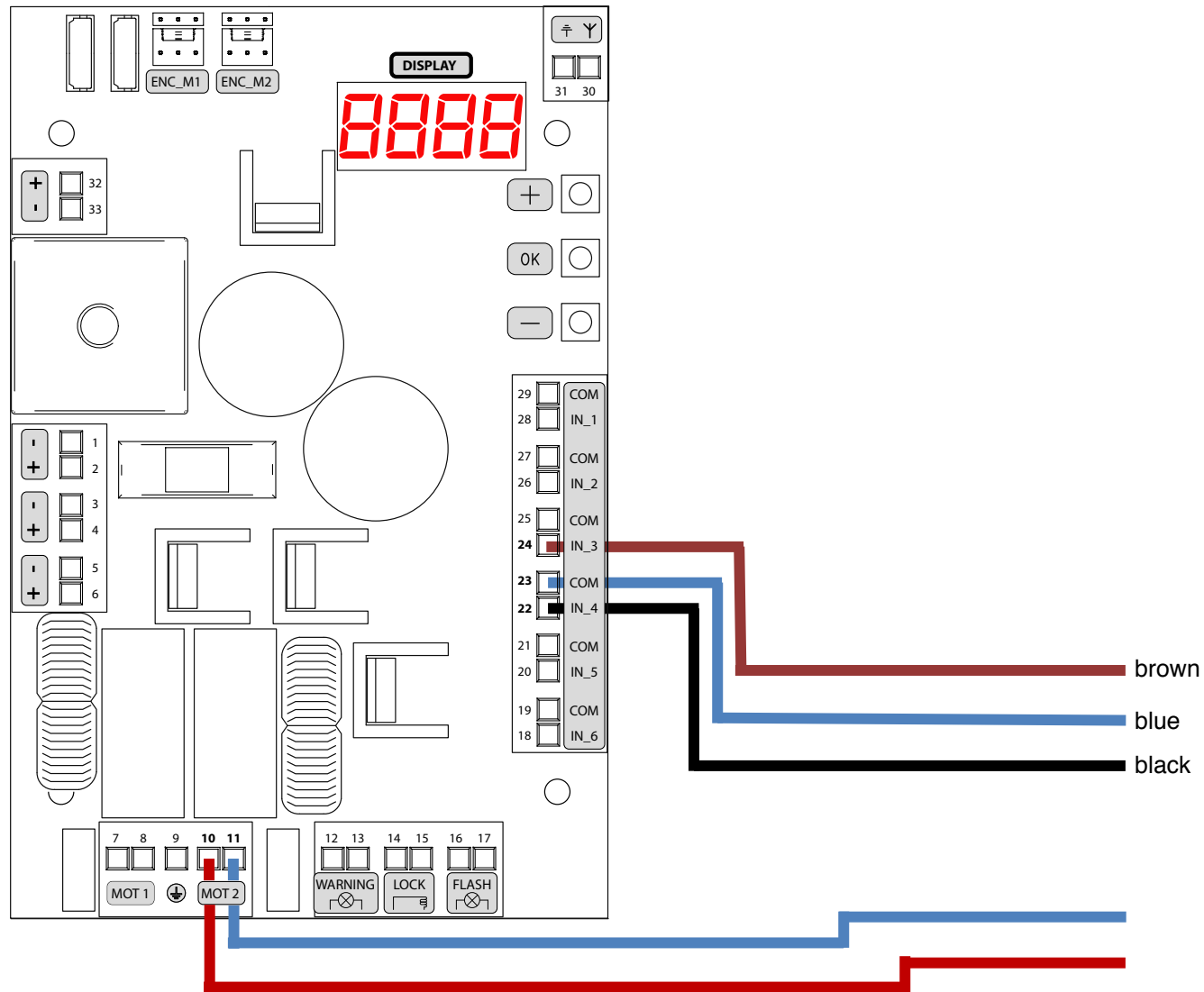


LIVI 502 - LIMIT SWITCH WIRING



Limit Switch Kit





Limit Switch Kit



DEA Control Board Settings

Ensure NET24N is in **TYPE 01**

Jumpers J5 & J9 are in Position B – “Operators without encoder”

Parameter	Value	Description
P019	013	Motor 2 Open Limit
P020	015	Motor 2 Close Limit
P021	012	Motor 1 Open Limit
P022	014	Motor 1 Close Limit
P028	003	“Look” Motor
P029	001	No Encoder(s)
P030	002	Two Motors