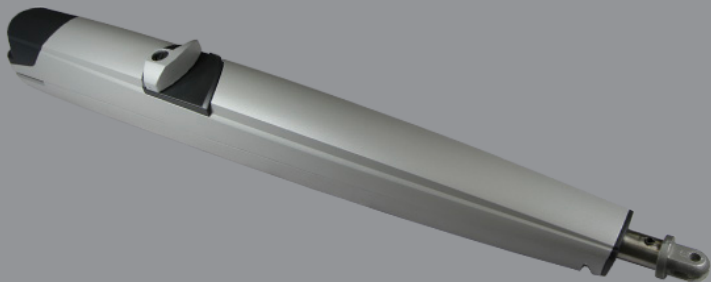


KITE 500

Kite is a robust, 24v Electromechanical swing gate operator with powder coated cast aluminium body.

Stops needed in open & closed positions.

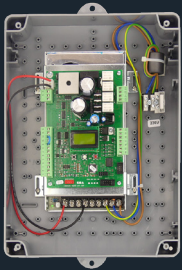
- 23 SECONDS TO 90°
- 50 % DUTY CYCLE
- 5.0 MAXIMUM GATE LENGTH



Kite 500 can be used on solar applications or add battery backup on request.

500KG

CONTROLLER



DIGITAL PROGRAMMING

24V KITE 500 is supplied with USER-2 Digital control board housed in an IP rated enclosure with transformer.

Details on page 26

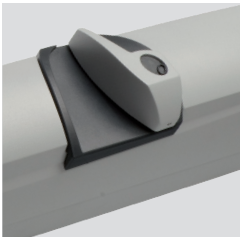
ACCEPTS ESUN Q TO ADD BATTERY BACK UP OR SOLAR



ALL METAL INTERNAL COMPONENTS



LOCKABLE CAST ALUMINIUM RELEASE LEVER



BACK MOUNT
Adjustable post mount brackets. No welding.
AAC-BRASU

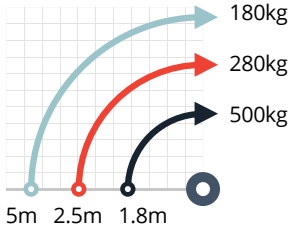


FRONT MOUNT
Bolt-on gate brackets.
AAC-BRASUA



OUT SWING BRACKETS
Allows gates to open outwards.
AAC-BRASUO

MAX. GATE LENGTH TO WEIGHT



ORDER CODE	KITE500	MAX. GATE WEIGHT	500 KG
POWER SUPPLY	SINGLE PHASE	MAX. GATE LENGTH	5.0 M**
MOTOR VOLTAGE	24 V (DC)	TIME TO 90°	23 SEC
MOTOR POWER	60 W	MAX. THRUST	2000 N
MAX. OPEN ANGLE	120°	LIMIT SWITCH	PHYSICAL STOPS REQUIRED
MAX. CYCLES PER HOUR	90*	DIMENSIONS (H-W-L)	121, 78, 930
DUTY CYCLE	50 %*	WORKING TEMP.	-20° /+55° C

*Maximum duty cycle based on the first working hour in a testing environment.
** Electric/magnetic locks should be fitted on gates 2m+ to protect gate and operator from damage by wind or forced entry.

