

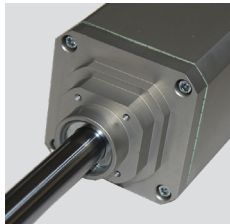
SUPER FULL TANK 1000

The strongest swing gate operator currently on the market.

Note in some applications it may be possible to install on gates up to 12m or 6m without the use of electric or magnetic locks. For industrial and high duty cycle applications.

- 1000 MM STROKE
- 100 % DUTY CYCLE
- 12 MAXIMUM GATE LENGTH

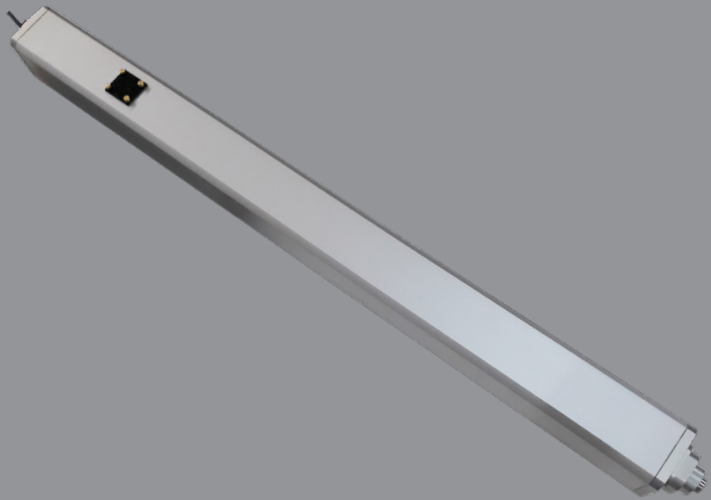
MACHINED FRONT & REAR FLANGES



MANUAL RELEASE



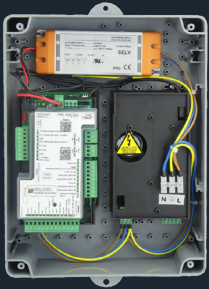
SPHERICAL JOINT FOR STROKE ADJUSTMENT



HYDRAULIC DRIVE Hydraulic operators suit intensive use environments and their high thrust output makes them suitable for extra large gates.

2500KG

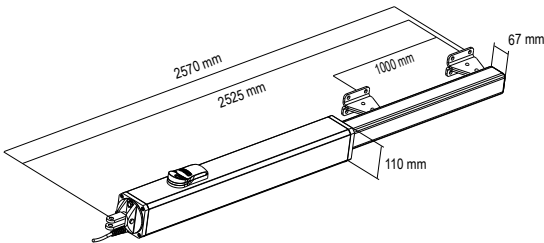
CONTROLLER



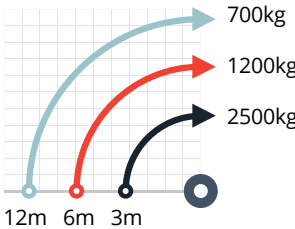
INVERTER EQUIPPED

UNIGATE uses a separate inverter power module and control board to achieve optimum heat management of power module components. The Inverter power module is connected to control board via USB cable.

Details on page 25



MAX. GATE LENGTH TO WEIGHT



ORDER CODE	SFTANK1000	MAX. GATE WEIGHT	2500 KG
POWER SUPPLY	SINGLE PHASE	MAX. GATE LENGTH	12 M**
MOTOR VOLTAGE	3-Phase 230 V (AC)	TIME TO 90°	33 SEC
MOTOR POWER	310 W	MAX. TORQUE	25000 N
MAX. OPEN ANGLE	125 °	LIMIT SWITCH	OPEN & CLOSE GATE STOPS REQUIRED
MAX. CYCLES PER HOUR	40*	DIMENSIONS (H-W-L)	110, 110, 2570
DUTY CYCLE	100 %*	WORKING TEMP.	-20 ° / +55 ° C
PUMP SIZE	6.0 L		

*Maximum duty cycle based on the first working hour in a testing environment
** Electric/magnetic locks should be fitted on gates 6m+ to protect gate and operator from damage by wind or forced entry.