

SUPER FULL TANK 500

Industrial hydraulic swing gate operator suitable for intensive use applications.

Max leaf length of 9m when used with suitable lock in open and closed positions. Note in some applications it may be possible to install on gates up to 4m without the use of electric or magnetic locks.

Physical gate stops required in open and closed positions.

Hydraulic slowdown is standard on all super full tank operators.

500

MM STROKE

100

% DUTY CYCLE

9.0

MAXIMUM GATE LENGTH

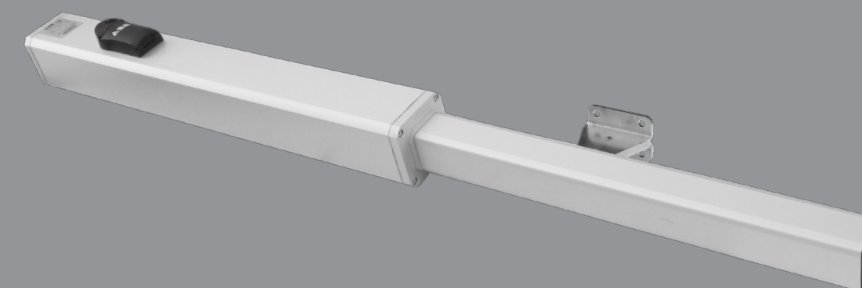
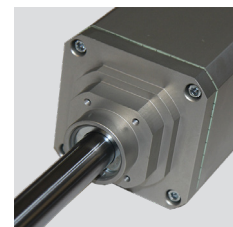
SIX LITRE PUMP



UNIGATE INVERTER EQUIPPED



VARIABLE SPEED HIGH-SPEED SHAFT

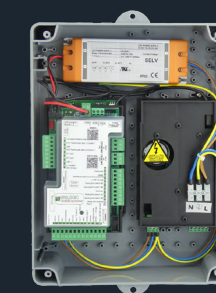


HYDRAULIC DRIVE

Hydraulic operators suit intensive use environments and their high thrust output makes them suitable for extra large gates.

2000KG

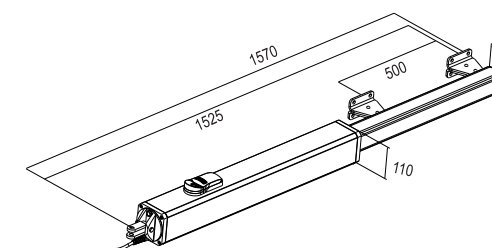
CONTROLLER



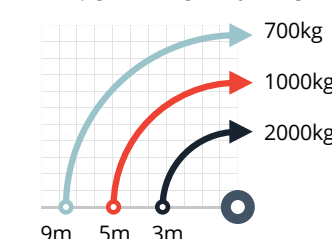
INVERTER EQUIPPED

UNIGATE uses a separate inverter power module and control board to achieve optimum heat management of power module components. The Inverter power module is connected to control board via USB cable.

Details on page 25



MAX. GATE LENGTH TO WEIGHT



ORDER CODE	SFTANK	MAX. GATE WEIGHT	2000 KG
POWER SUPPLY	SINGLE PHASE	MAX. GATE LENGTH	9.0 M**
MOTOR VOLTAGE	3-Phase 230 V (AC)	TIME TO 90°	16.5 SEC
MOTOR POWER	310 W	MAX. TORQUE	25000 N
MAX. OPEN ANGLE	125 °	LIMIT SWITCH	OPEN & CLOSE GATE STOPS REQUIRED
MAX. CYCLES PER HOUR	100*	DIMENSIONS (H-W-L)	110, 110, 1570
DUTY CYCLE	100 %*	WORKING TEMP.	-20 °/+55 ° C
PUMP SIZE	6.0 L		

*Maximum duty cycle based on the first working hour in a testing environment.
** Electric/magnetic locks should be fitted on gates 4m+ to protect gate and operator from damage by wind or forced entry.
Lockable in open & close, open only, close only or no lock options.