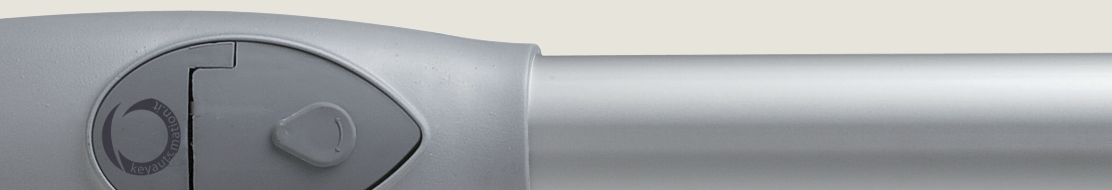


RODMAN

THE BIG
LINEAR
DRIVE
MOTOR
FOR
SERIOUS
GATES

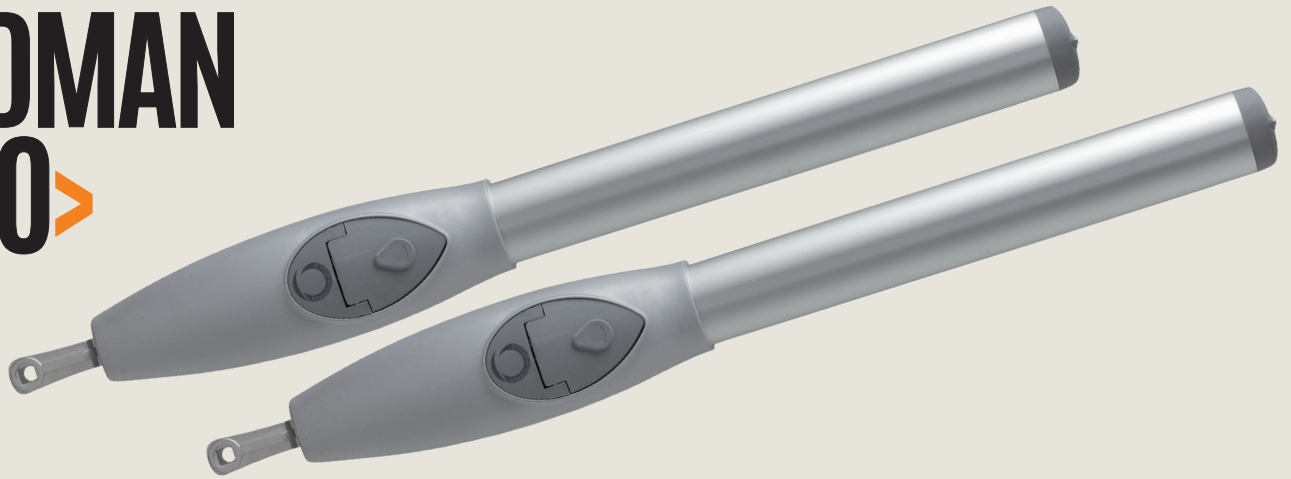


The Rodman is tough but smooth. Double bearing bling on the main shaft makes the Rodman one bad ass and reliable machine that'll give years of uninterrupted service.



MADE in ITALY
24V & 230V

RODMAN INFO >



RODMAN'S CONTROL PANEL HAS THE LATEST ACTIVATION AND SAFETY FEATURES BUILT IN

These include a slow down function to make sure that if the gate comes into contact with an obstacle the gate stops and begins to reverse.



**SUB
REMOTE**

WATER RESISTANT

Designed and manufactured in Italy with quality materials and smart details thanks to the new tri-injection molding process. Metal chromed detail adds a touch of style.

Ergonomic recessed buttons stop the buttons being accidentally pressed when in a pocket or handbag.

NEW GENERATION 24V CONTROLLER



- LED screen explains instructions
- Control multiple 24V systems
- Accepts up to 200 remotes
- Open gate indicator output
- Electrolock output
- Two photocell terminals
- LED courtesy light output

The world's most advanced control board uses a full-screen Palm Programmer featuring detailed instructions to make programming a more simple process.

Compatible with all home automation systems.

Standard or programable slowdown open/close & automatic pedestrian closing.

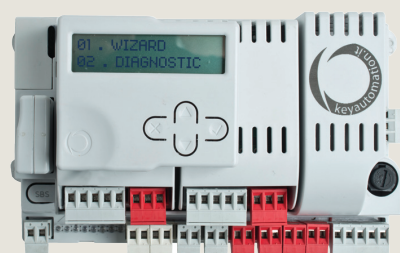
Integrates timed lighting systems overnight. Illuminate an entrance or garden independent of the gate operation.



Display module



24v power module



4 channel
plug-in receiver

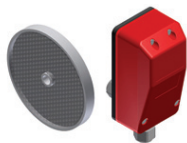


ACCESS CONTROL >>



GSM CONTROL

Operate the gate with a mobile phone



REFLECTIVE SENSOR

Stops a gate closing on pedestrian or car



EXIT SENSOR

Buried beside the driveway to auto open the gate on exit



SUB REMOTE

A different colour for the whole family

BOOSTER AERIAL

Extend the remote's range



VIDEO INTERCOM

See who's at the gate



ENTRANCE KEYPAD

Tough, waterproof & vandalproof keypad



12V LOCK

Add security & protect the motor from damage

AUSTRALIAN MADE HARDWARE

LINEAR MOTOR MOUNTS

- Multi-hole for quick adjustment and the perfect angle
- Tek screw brackets to gate and post - no welding on site
- Hot dip gal finish
- Strong & great design



We design our Trade First hardware to make automation installs quicker, easier and to improve the overall performance of the gate system

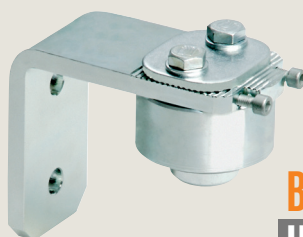
PRO Gate HARDWARE

MADE in ITALY

GATE STOP



Keeps double gates edges together when closed and resists forced entry



BEARING HINGES

For automation with HEAVY steel gates



230V

KIT #1

230V Motor
Remote (x2 Black)
Controller + Receiver
Trade First brackets
ASW-RODMAN230-PR01

KIT #2

230V Motor (x2)
Remote (x2 Black)
Controller + Receiver
Trade First brackets
ASW-RODMAN230-PR02

24V

KIT #3

24V Motor
Remote (x2 Black)
Controller + Receiver
Trade First brackets
ASW-RODMAN24-PR01

KIT #4

24V Motor (x2)
Remote (x2 Black)
Controller + Receiver
Trade First brackets
ASW-RODMAN24-PR02

CUSTOM KIT

Build a kit using any parts

GATE TECH

WEIGHT, DIMENSIONS, INFILL & TRAFFIC

These four things are the key to selecting the correct motor and gate hardware.

What's the width to height ratio? Does it have a solid infill? How many openings per hour? How heavy is it?

EFFECTIVE GATE WEIGHT

When is 100kg gate really 200kg?

HINGES

Hardware manufacturer's hinge capacity ratings are based a gate with square dimensions (height & width the same). Gates wider than they are high need hinges rated more than the gate's weight.

Working out the effective gate weight

Effective Gate Weight = actual weight x $\frac{\text{length}}{\text{height}}$

Eg. A 100kg gate 3m x 1.5m high has an effective weight of 100 x 2 and needs hinges rated above **200KG**

MOTOR RATING

MOTOR

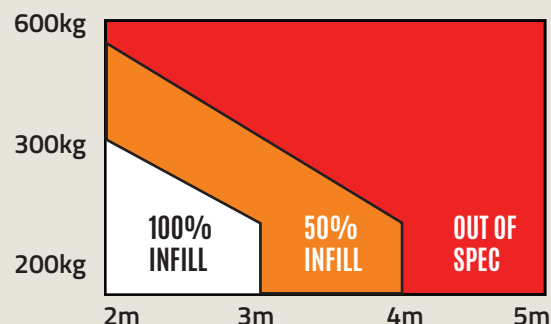
Manufacturers set a motor's rating by laboratory testing in a perfect environment but in the real world it's the effective gate weight that matters.

A motor's rating is based on the maximum weight it can pull on a perfect arc with all new hardware perfectly installed and aligned with the motor, posts and gate. If the gate has infill a slight breeze places load placed on the motor. The speed of the wind can greatly increase of the effective weight of the gate. As hardware wears becoming less efficient adding more to the effective weight making the right choice of motor even more crucial.

DUTY CYCLE

Rodman has a ton of Newtons in pulling power for medium size swing gates and up to a 80% duty cycle.

INFILL EFFECT



Wind loading on gates with 100% infill places extra load on the motor. 230V motors are most suited in these cases.

MOUNTING POINTS

The position of the mounting brackets relative to the gate hinges needs careful attention. With all linear automation correct motor geometry will ensure the automation performs at its best and add years to the life of the hinges.

Correctly installed Rodman opens a gate leaf up to 120°. Tables detailing the effect of mounting position are on our website.

TECHNICAL DATA		24V	230V
MOTOR			
opening time at 90°	sec	24	24
pulling force	N	1500	1700
working cycle	%	80	30
motor power	Vdc	24	230
protection degree	IP	44	44
dimensions (L-W-H)	mm	995-108-110	995-108-110
motor weight	kg	8.5	9.5
working temperature	°C	-20 + 55	-20 + 55
maximum leaf weight (ea.)	kg	600	600
stroke	mm	490	490
REMOTE & RECEIVER			
SUB Remote		rolling codes	rolling codes
RX4 Receiver		4 channel	4 channel
CONTROL BOARD			
control board		14A	NET230N
input power	VAC	230	230
dimensions (L-D-H)	mm		222-110-175
max. cable distance	mtrs	10	10

Downee

Tech Support
1800 241 733